

Now available through Rocky Mountain Analytical®!

Rocky Mountain Analytical is an accredited Canadian medical laboratory, providing clear and reliable tests to preventive and integrative medicine professionals since 2002.

With a commitment to keeping your patients healthy, **Rocky Mountain Analytical** is proud to offer **Gut-Well™** Digestive Stool Analysis in our portfolio of laboratory tests—telling you what you need to know about your patient's GI symptoms.

Register with us online at rmlab.com. Once registered, you can order **Gut-Well** Digestive Stool Analysis by:



Going online

<https://dropsite.rmalab.com>



Giving us a call

1.866.370.5227



Sending us an e-mail

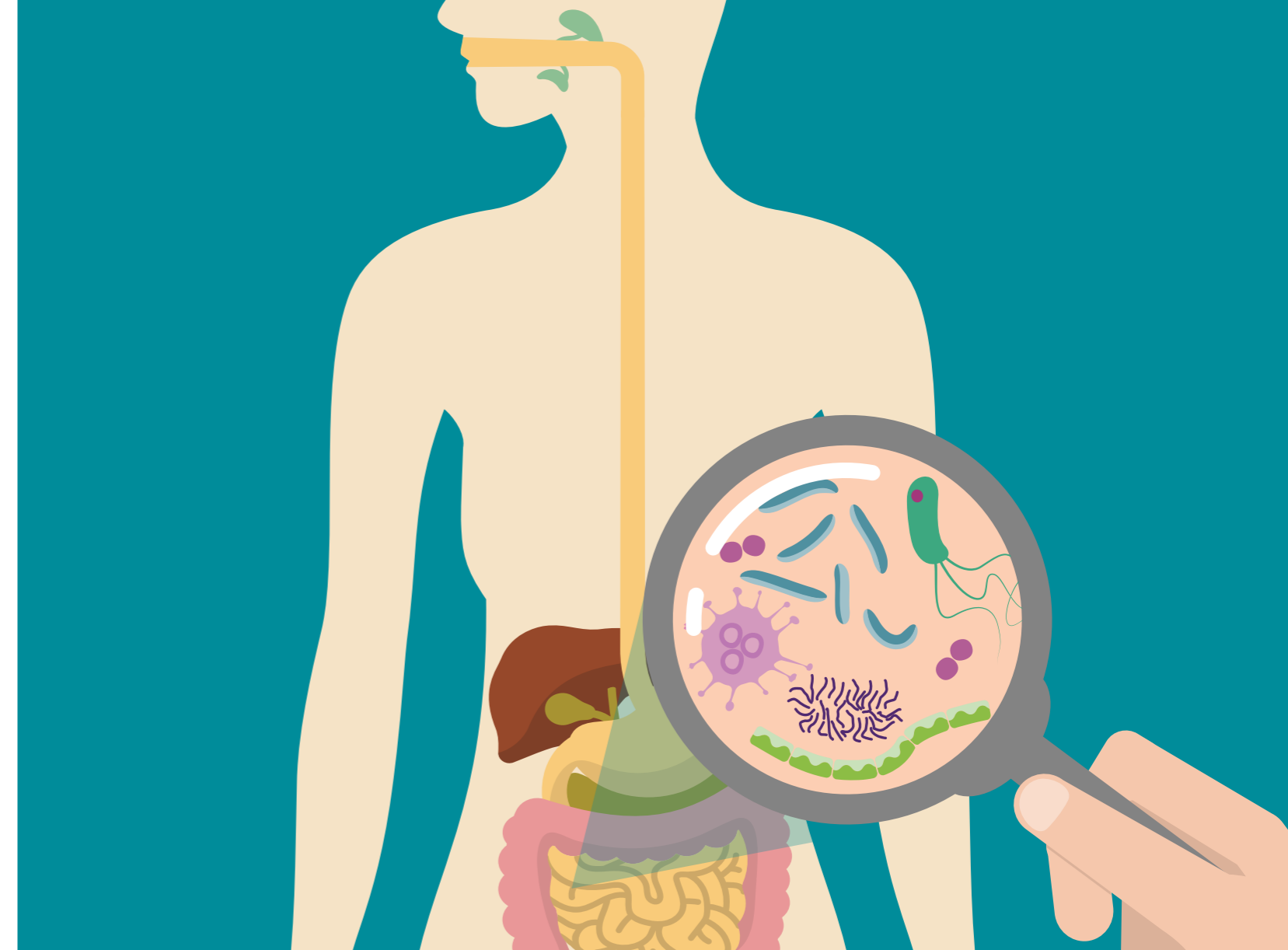
info@rmlab.com

Visit rmlab.com for more information.

Order **Gut-Well** Digestive Stool Analysis today to get to the bottom of your patient's GI symptoms.

© 2018 Rocky Mountain Analytical, a division of LifeLabs LP.

All company and product names and logos are trademarks or registered trademarks of their respective owners.



Ever wonder what's really happening on the inside?

Are your patients suffering from diarrhea, constipation, bloating, gas, or indigestion?

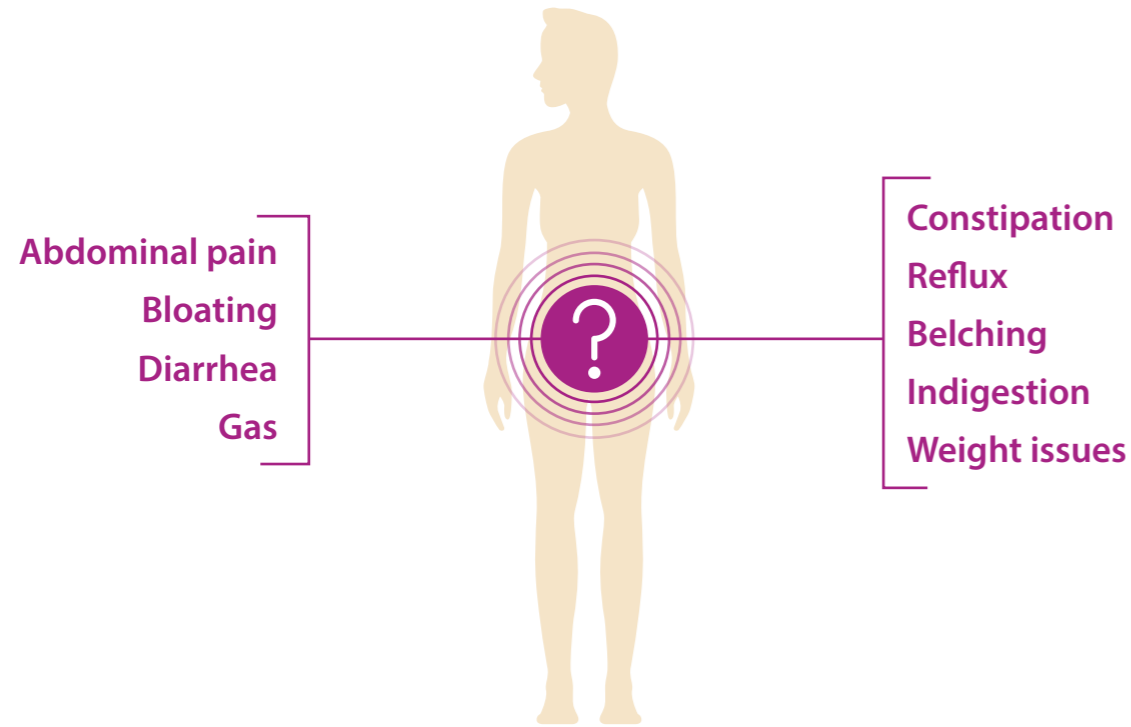
Rocky Mountain Analytical® is now offering **Gut-Well™** Digestive Stool Analysis. This simple, non-invasive, digestive stool analysis will provide a broad range of information about your patients' overall gut health.

A SIMPLE, NON-INVASIVE, AT-HOME TEST.

DO YOU HAVE PATIENTS WITH UNEXPLAINED GASTROINTESTINAL (GI) SYMPTOMS?

Rocky Mountain Analytical® is now offering Gut-Well™ Digestive Stool Analysis

Gut-Well Digestive Stool Analysis is an evaluation of your patient's stool, which may help in the management of many GI issues.



Gut-Well Digestive Stool Analysis will provide you with information regarding your patient's:



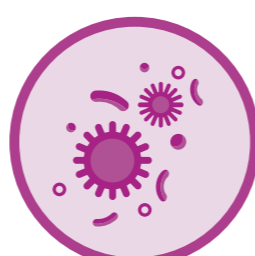
Digestion and Absorption



Gut Ecology



Inflammation and Immune Function



Pathogen Profile

Your patient's **Gut-Well** Digestive Stool Analysis results will be summarized in a visual report along with expert commentary, allowing you to identify **clinically actionable problems**.

Gut-Well™ Digestive Stool Analysis uses the following biomarkers and tests to...



...assess the basic function of your patient's GI tract, and make sure that they are getting the nutrition they need.



Elastase, a marker of exocrine pancreatic function



Fecal fat, a marker of fat digestion and absorption



...assess the overall health of the colon's "ecosystem".



Beneficial Short-Chain Fatty Acids (SCFA), a marker of fiber and starch fermentation



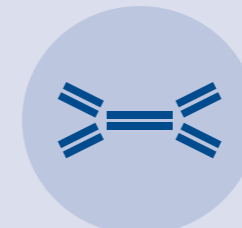
Putrefactive SCFAs, a marker of protein fermentation



...monitor overall gut health and distinguish between inflammatory bowel disease and irritable bowel syndrome.



Calprotectin, a marker of neutrophil-driven inflammation



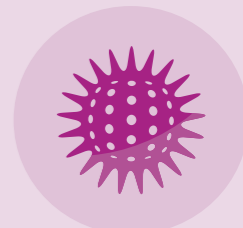
Secretory IgA, a marker of gut secretory immunity, tolerance, and exclusion of bacteria



...identify the pathogens that may be infecting your patient's GI tract.



Bacteriology



Parasitology